

CERTIFIED LAND CORNER RECORDATION

DESCRIPTION OF CORNER EVIDENCE FOUND, AND ORIGINAL RECORD (If known)
G.L. O. Reocrd-Granite Boulder 15" X 10" X 6", Set in 1870
Found-Notched Stone Fitting G.L.O. Record Description

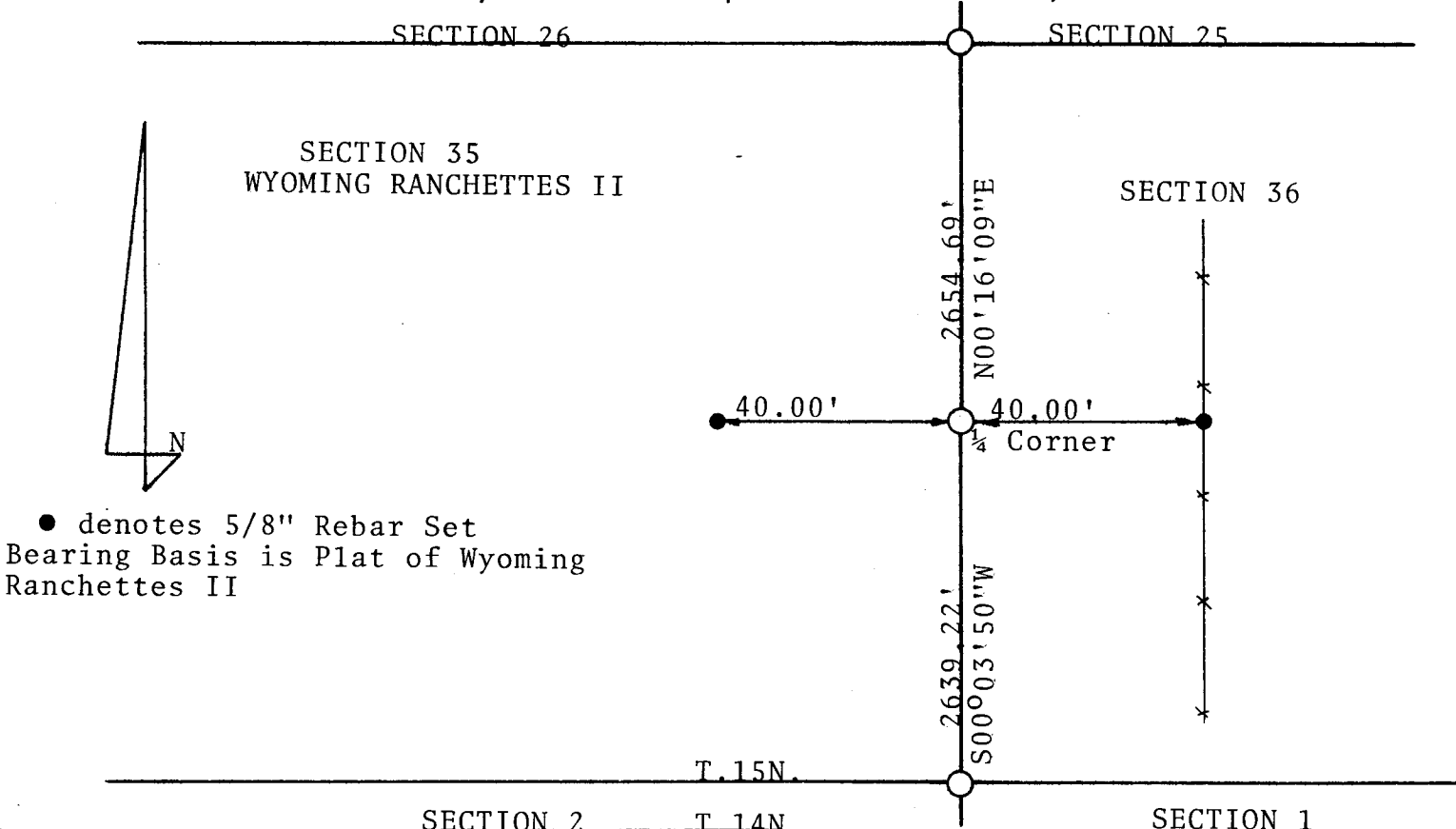
1/4
35 | 36

T.15N., R.66W., 6th P.M.

DESCRIPTION OF MONUMENT AND ACCESSORIES ESTABLISHED
TO PERPETUATE THE ORIGINAL LOCATION OF THIS CORNER:

At the Corner Set a 2" dia. X 30" long iron pipe with Brass Cap
Accessories Raised Rock Mound Around Monument

SKETCH, WITH COURSE AND DISTANCE TO ADJACENT CORNER IF DETERMINED IN THIS SURVEY.
(May Sketch or Paste Reproduction on Reverse Side.)



● denotes 5/8" Rebar Set
Bearing Basis is Plat of Wyoming
Ranchettes II

I, William Condrey certify that I have carefully performed or reviewed the work
done on the diagrammed corner as reported on this recordation form and approve the same.

William Condrey Wyoming L.S. No. 577
Signature of Surveyor Registration No.

STATE OF WYOMING,
Office of Clerk and Recorder,
County of Saramie

This "corner record" was filed for record on the 20 day of October, 19 76, was noted
on the cross-index plat and is assigned page No. _____, in book No. _____

James C. Whitcomb
County Official

Cross Index No.	<u>X 21</u>	T. <u>15</u>	R. <u>66</u>	Mer.
_____	_____	T. _____	R. _____	Mer.
_____	_____	T. _____	R. _____	Mer.
_____	_____	T. _____	R. _____	Mer.
_____	_____	T. _____	R. _____	Mer.
_____	_____	T. _____	R. _____	Mer.
_____	_____	T. _____	R. _____	Mer.

The State of Wyoming }
County of Laramie } SS

This instrument was filed for record
at 1133 o'clock A M. on the
20 day of Oct
A. D. 19 76 and duly recorded in
book ^{on page}

Janet C. Whitcomb

County Clerk & Ex-Officio Register at Deeds
By Deputy